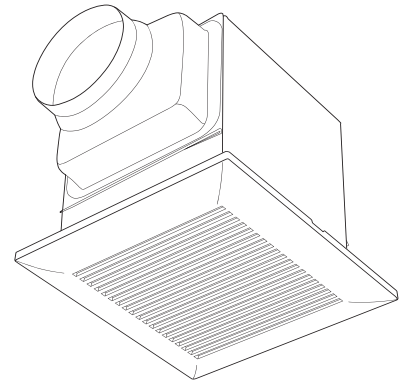




VENTILATION

SERIES FANS

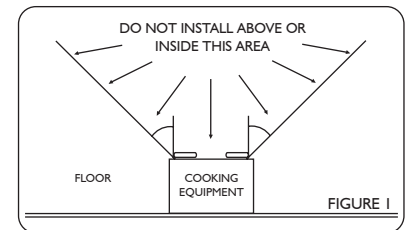
READ AND SAVE THESE INSTRUCTIONS! INSTALLATION INSTRUCTIONS



Ceiling Tubular Ventilating Fan Models: PQ 50, PQ 60, PQ 70, PQ 80, PQ 120

SUITABLE FOR USE OVER TUB OR SHOWER ENCLOSURES WHEN INSTALLED IN A GFCI PROTECTED BRANCH CIRCUIT. THIS PRODUCT MUST BE INSTALLED BY A QUALIFIED TECHNICIAN

- Do not mount in a ceiling thermally insulated to a value greater than R40
- Designed to be mounted in the ceiling.
- **WARNING:** To reduce the risk of fire or electrical shock, do not use fan with any solid state speed control device.
- **WARNING:** To reduce the risk of electrical shock, disconnect the power before servicing.
- Note: not for use in kitchens. (Refer to Figure 1)



IMPORTANT SAFELY INSTRUCTIONS

WARNING: TO REDUCE THE RISK OF FIRE, ELECTRIC SHOCK, OR INJURY TO PERSONS, OBSERVE THE FOLLOWING:

1. Use this fan in the manner intended by the manufacturer. If you have questions, contact the manufacturer or distributors / dealer.
2. Before servicing or cleaning unit, switch power off at service panel and lock service panel to prevent power from being switched on accidentally. When the service disconnecting means cannot be locked, securely fasten a prominent warning device, such as a tag, to the service panel.

CAUTION: Fan is for general ventilating use only. Do not use to exhaust hazardous or explosive material and vapors.

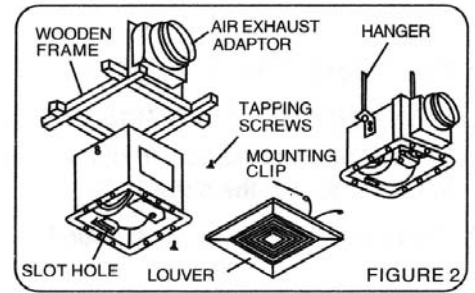
IMPORTANT SAFELY INSTRUCTIONS

WARNING: TO REDUCE THE RISK OF FIRE, ELECTRIC SHOCK, OR INJURY TO PERSONS, OBSERVE THE FOLLOWING:

1. Installation work and electrical wiring must be done by qualified persons in accordance with all applicable codes and standard, including fire-rated construction.
2. Sufficient air is needed for proper combustion and exhausting of gases through the flue (chimney) of fuel burning- equipment to prevent back-drafting. Follow the heating equipment manufacturer's guideline and safety standards such as those published by the local code authorities.
3. When cutting or drilling into the wall or ceiling, do not damage electrical wiring and other hidden utility.
4. Ducted fans must always vent to the outdoors.
5. If unit is to be installed over a tub or shower, it must be marked as appropriate for the application and be connected to a GFCI (ground fault circuit interrupter) protected branch circuit.
6. Never place a switch where it can be reached from a tub or shower.

INSTALLATION OF HOUSING (Refer to Figure 2)

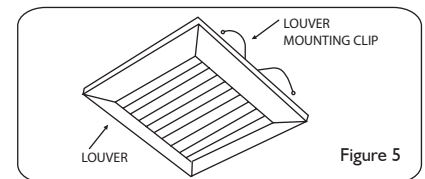
PQ 50	Rough Opening: 17.8cm (7") l * 17.8cm (7") w Housing Size: 17cm (6 11/16") l * 17cm (6 11/16") w * 18.5cm (7 9/32") h
PQ 60	Rough Opening: 23.4cm (9 1/4") l * 23.4cm (9 1/4") w Housing Size: 22.8cm (9") l * 22.8cm (9") w * 17cm (6 11/16") h
PQ 70, PQ 80	Rough Opening: 23.4cm (9 1/4") l * 23.4cm (9 1/4") w Housing Size: 22.8cm (9") l * 22.8cm (9") w * 17cm (6 11/16") h
PQ 120	Rough Opening: 27cm (11") l * 27cm (11") w Housing Size: 26cm (10 1/4") l * 26cm (10 1/4") w * 22.3cm (6 3/4") h



1. Remove the louver from the unit before the mounting
2. Install sliding hanger bars onto the fan housing by inserting the bars into the hanger bar support guide rail.
3. Loosely attach one end of a hanger bar to joist by inserting a screw through the eyelet at the end of the bar into the wooden joist.
4. Attach the second hanger bar to the same joist.
5. Level the fan housing and attach the third and fourth hanger bar ends to the next joist. Adjust and tighten the screws.
6. For the louver to fit properly, the flange of the housing must be leveled to the soffit level of the ceiling.

INSTALLATION OF LOUVER (Refer to Figure 2)

The louver can be installed when the finished ceiling has been completed, Place the louver's torsion spring mounting clips into the slot holes on the both sides of the fan unit and press it closed.

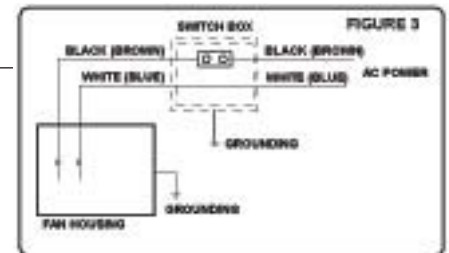


WIRING (Refer to Figure 3)

IMPORTANT: The power to your GNN Air ventilation fan must be disconnected before installation begins.

IMPORTANT: Be certain all wiring complies with local codes and that the fan unit is properly ground.

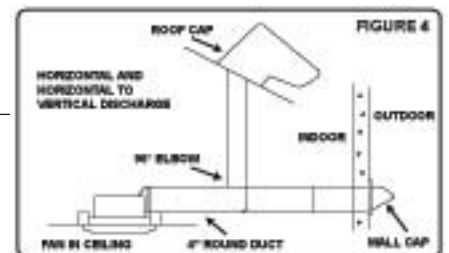
1. Run power leads from the wall switch or time switch to the unit.
2. Using the approved wire connectors, connect supply wires to fan wires: black (or brown) to black (or brown) and white (or blue) to white (or blue). Connected ground wire (green or bare) to the ground connection in the fan's junction box.



DUCTING (Refer to Figure 4)

1. Run 4" round duct from the air discharge opening to the outside of the building.
2. Sheet metal duct is recommended.

Properly insulate the area around the fan to minimize building heat loss and gain. Loose fill or batt insulation can be placed over the fan housing in the attic.



MAINTENANCE (Refer to Figure 4)

WARNING: Disconnect the power source before servicing.

NOTE: Never use petrol, benzene, thinner or any other chemicals for cleaning the ventilating fan. Do not allow water get into motor. Do not immerse plastic parts in hot water over 60 C.

Routine maintenance must be done every year.

1. Remove the louver from the fan.
2. Wash and clean the louver.

3. Using a soft cloth and dampened with mild detergent to remove any dirt or duct build-up from the unit and wipe to dry.
4. After cleaning, replace the louver and confirm that fan has been reassembled correctly.

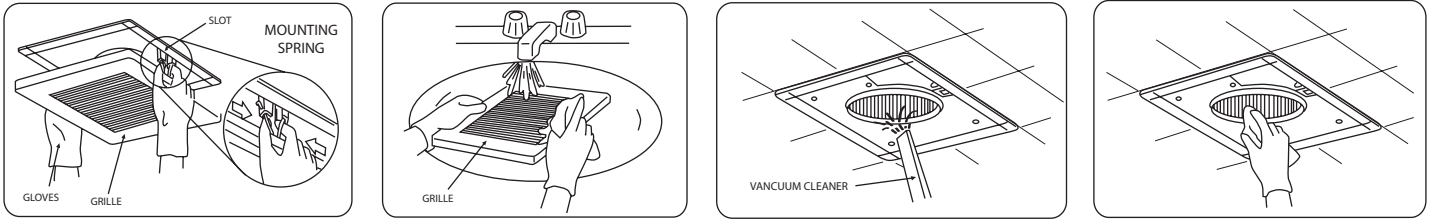


FIGURE 8

SPECIFICATIONS

Model No.	Air Direction	Volts	Hz	Duct Diameter (inch)	Noise (Sones)	Power Consumption (W)	Speed (RPM)	Air Deliver (CFM)	Weight kg (lbs)
PQ50	Exhaust	120	60	4	0.8	27.7	1203	65.0	3.5
PQ60, PQ70	Exhaust	120	60	4	0.9	27.9	1215	66.4	4
PQ80	Exhaust	120	60	4	1.0	28.2	1321	68.0	4.25
PQ120	Exhaust	120	60	4	1.5	30.5	1326	69.7	4.5

* Static pressure at 0.1 inches of water.

Specifications are based on HVI standard.

* Product specifications subject to change without notice



PRIME ONE YEARS LIMITED WARRANTY

File This Warranty with Your Important Papers

Consumer must provide proof of date of purchase.

One year warranty from date of original purchase.

Prime Industrial Products Inc. WILL PAY FOR:

Under normal operation conditions, any breakdown caused by manufacture can be replaced or repaired with no charge for one year.

Product repairs must be performed by an authorized GNN service center.

Prime Industrial Products Inc. WILL NOT PAY FOR:

Come to your home to teach you how to use the product. Replace light bulbs, batteries and other consumable items or replacement for changes in color or appearance resulting from aging, the element, or normal wear and tear.

Repair damage or failure caused by acts of God, abuse, misuse, abnormal usage, faulty installation, use or application for which the product is not intended, improper maintenance or any repairs other than those provided by "Prime" authorized service center.

Repair or replace any product purchased or installed outside the contiguous U.S., Alaska, Hawaii, Canada, Prime Industrial Products Inc. shall not be liable for incidental or consequential damages arising out of, or in connection with, the use or performance of the product or other indirect damages with respect to loss of property, revenues or profits or costs of removal, installation or reinstallation.

DATE OF INSTALLATION

BUILDER or INSTALLER'S NAME